

PROGRAMMA DI RIQUALIFICAZIONE URBANA "RIMODULATO"

COMUNE DI FOGGIA

UBICAZIONE: ZONA CROCI NORD - VIA LUCERA

EDILIZIA RESIDENZIALE PUBBLICA

SECONDO STRALCIO FUNZIONALE

Progetto:
- Ing. Matteo Torre
- Ing. Emilio Sacco

PROGETTO ESECUTIVO
RELATIVO AI LOTTI 5-6

Calcoli Statichi:
- Ing. Alfonso Cristalli

PILASTRI
4°-5°-6°-7° STILATA
LOTTI 5-6

Collaboratore:
- Geom. Salvatore Rubino

DATA
NOME FILE

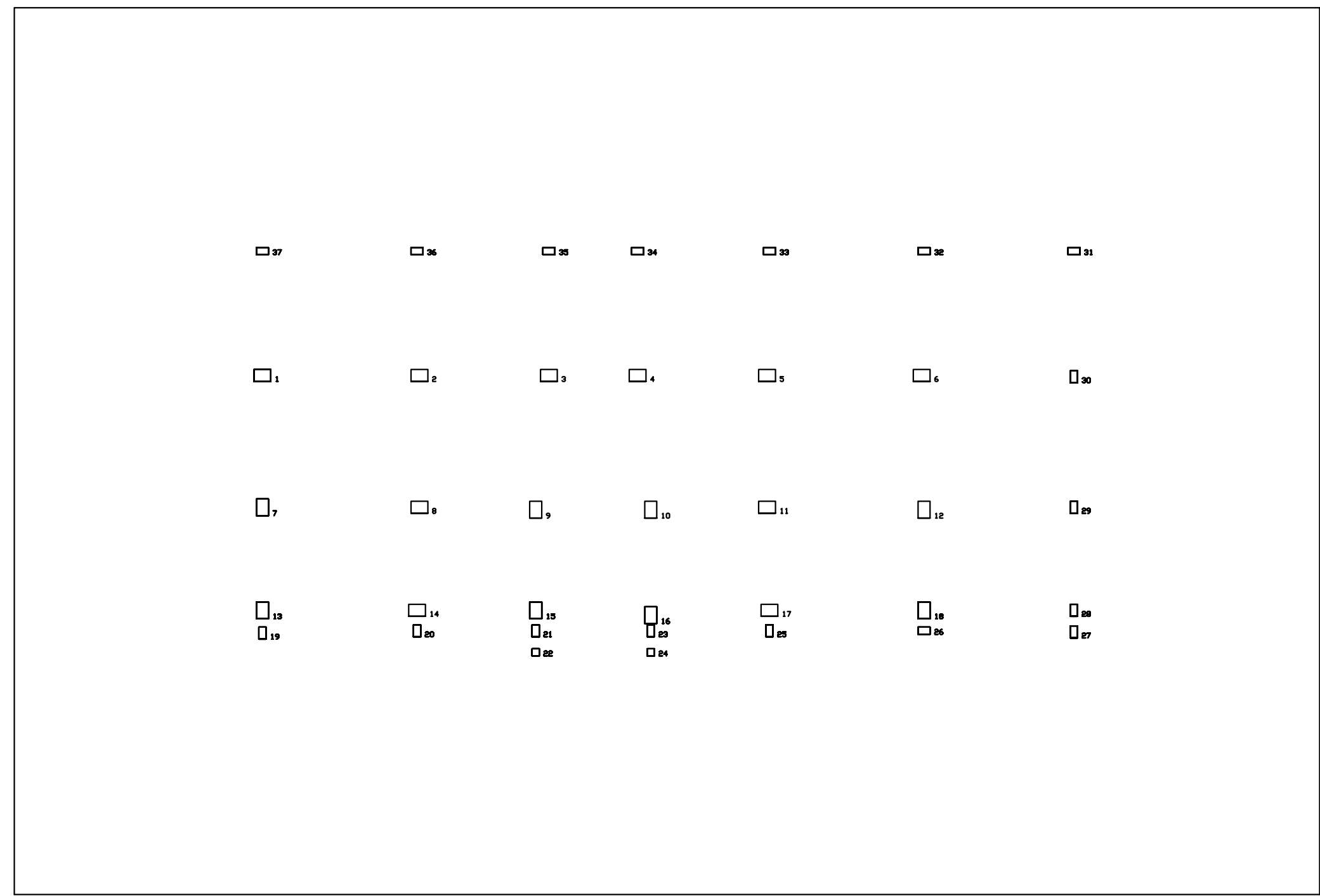
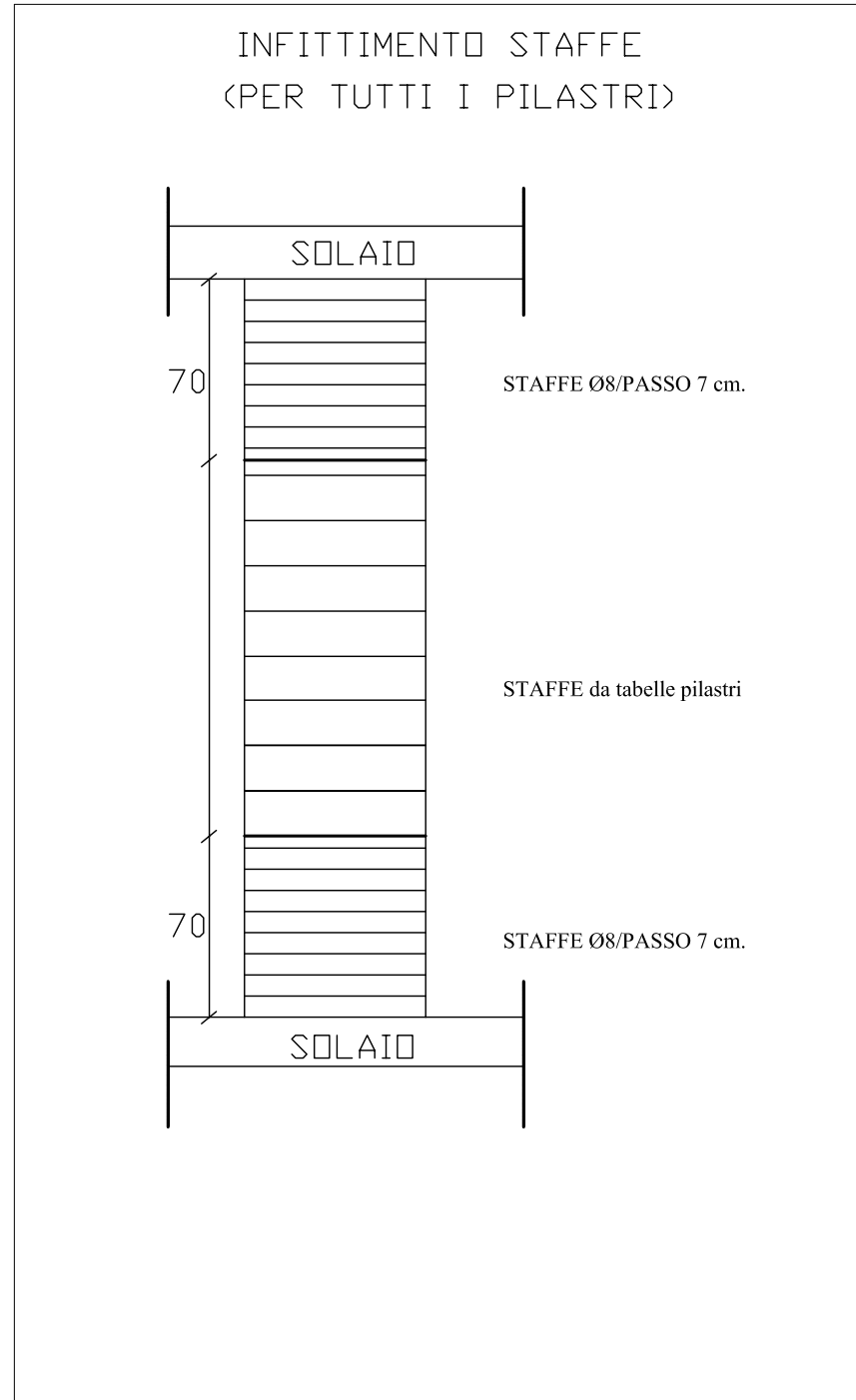
REV. DATA DESCRIZIONE ESECUTORE

5. 10/01/2008

ELABORATO N° SCALA

E S 18 1:20 PE

Il Responsabile del Procedimento:

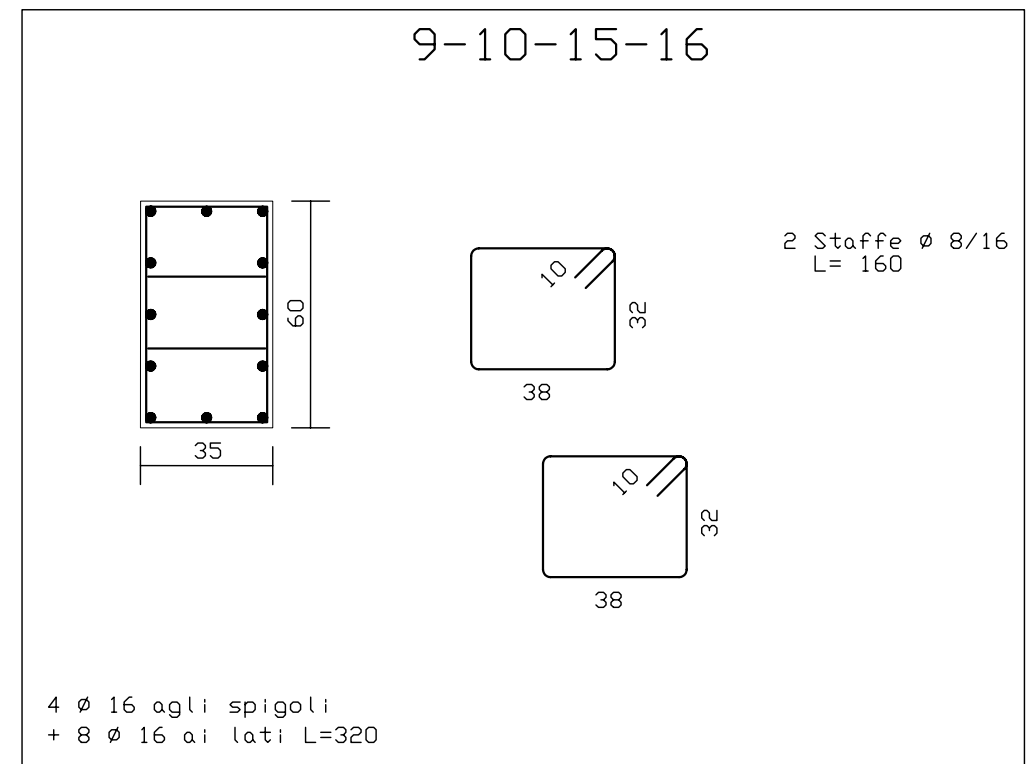


Infittire le staffe con passo
non superiore a cm 8 per cm 60
al piede e in testa al pilastro
Legature di collegamento # 6/30

Computo dei materiali:

Barre di armatura :
16 L TOT =153,6m (+Kg 242,43)
Staffe # 8 L=268,8m (+Kg 106,06)
Infittimento Staffe (Kg. 42,42)
Num=168 38 X 32 L=268,8m
TOTALE ACCIAIO :
Kg 390,91
TOTALE CALCESTRUZZO :
mc 2,14
TOTALE CASSERI :
mq 19,38

PILASTRI PIANO
TORRINO VANO SCALE



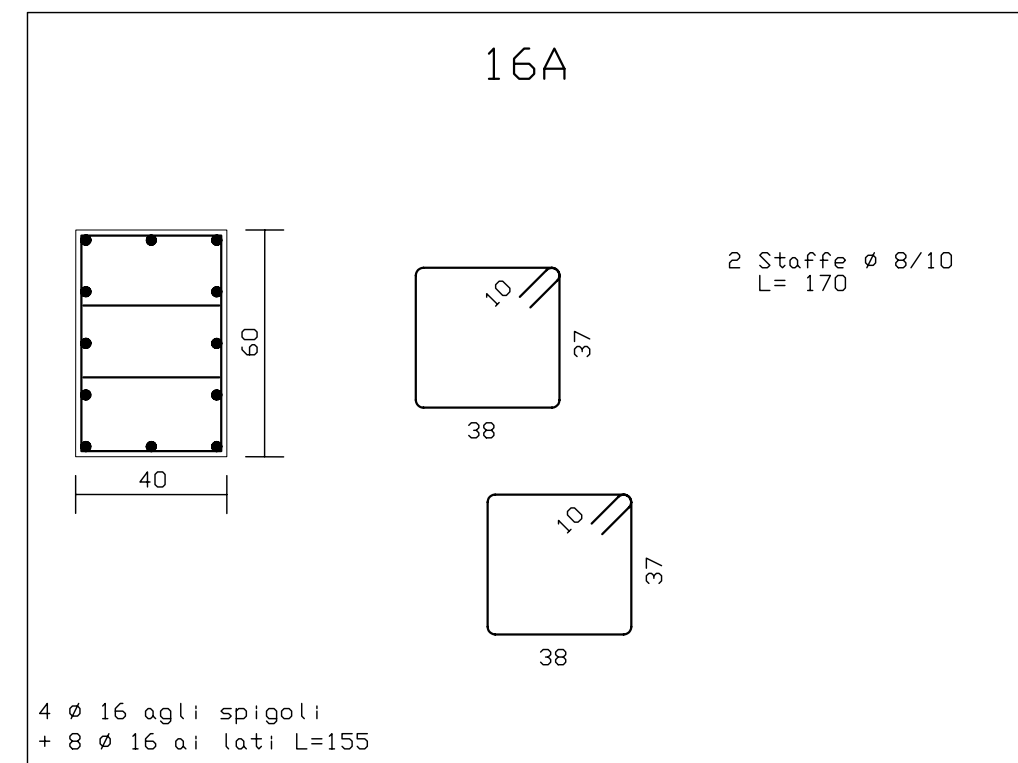
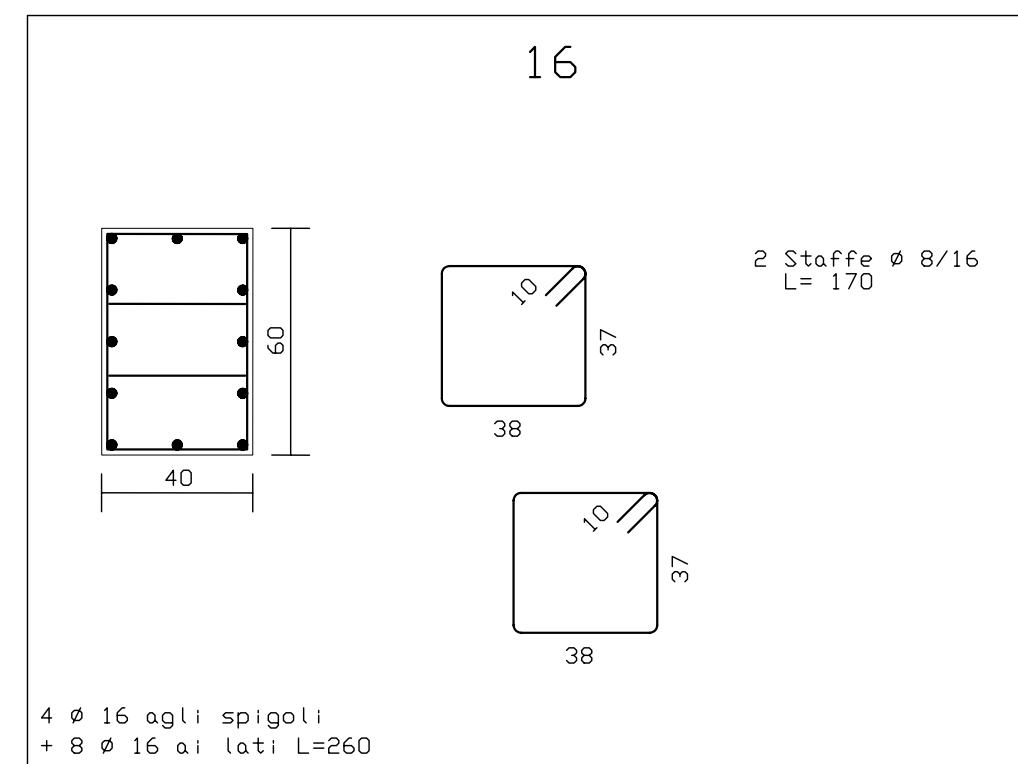
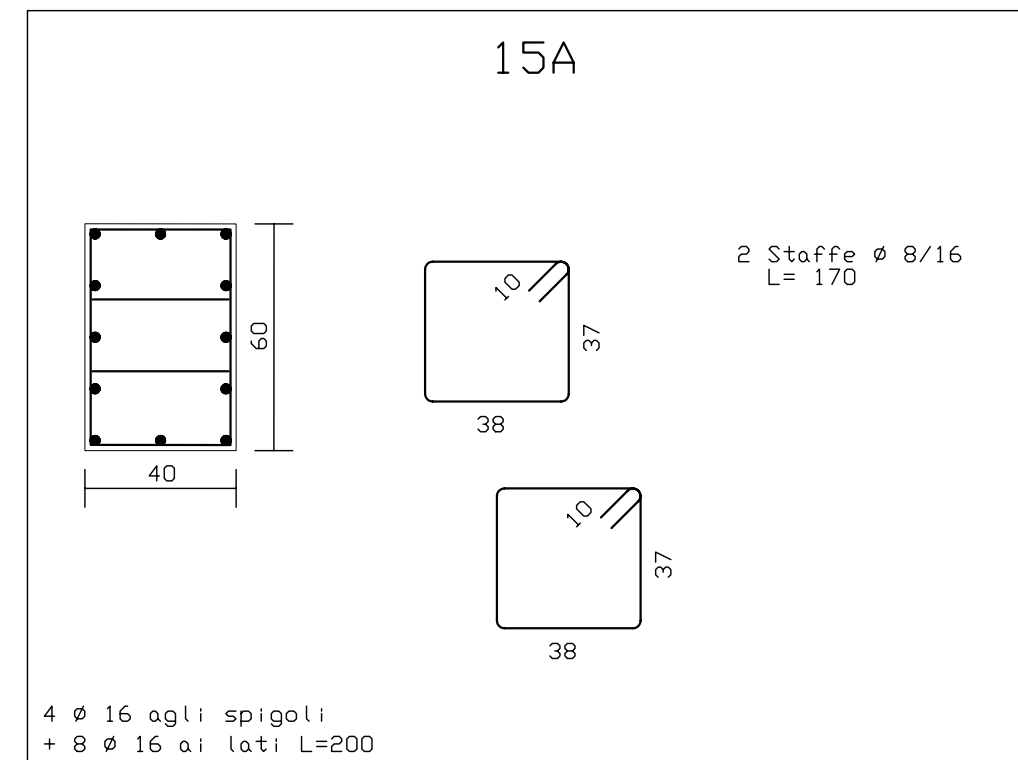
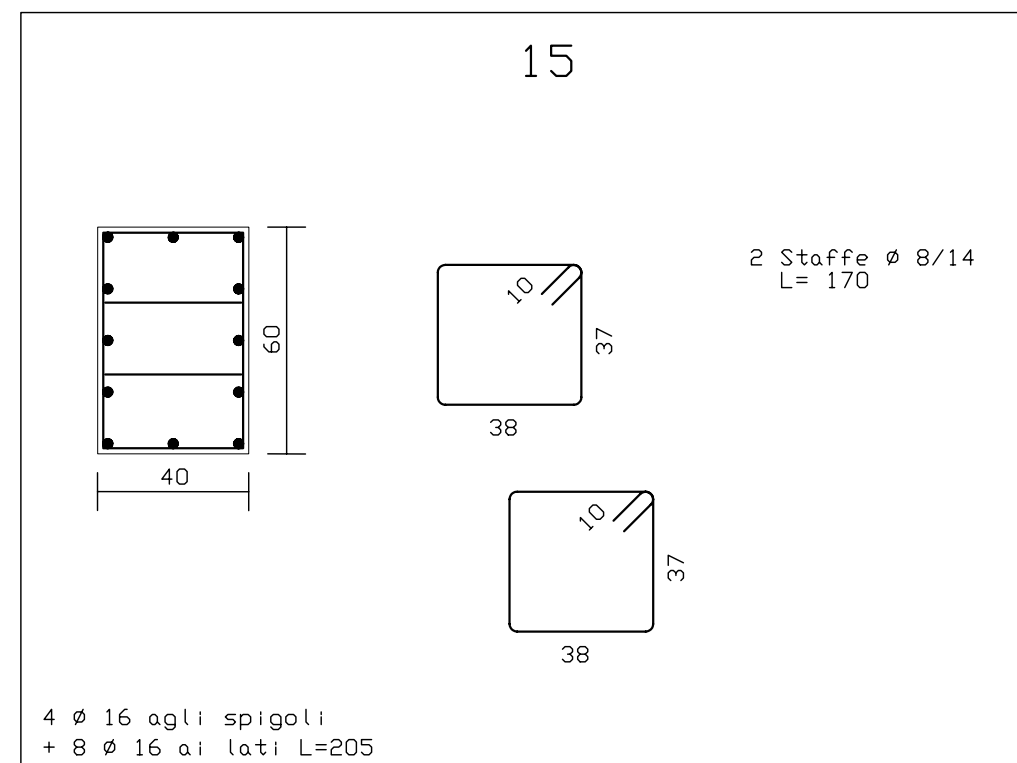
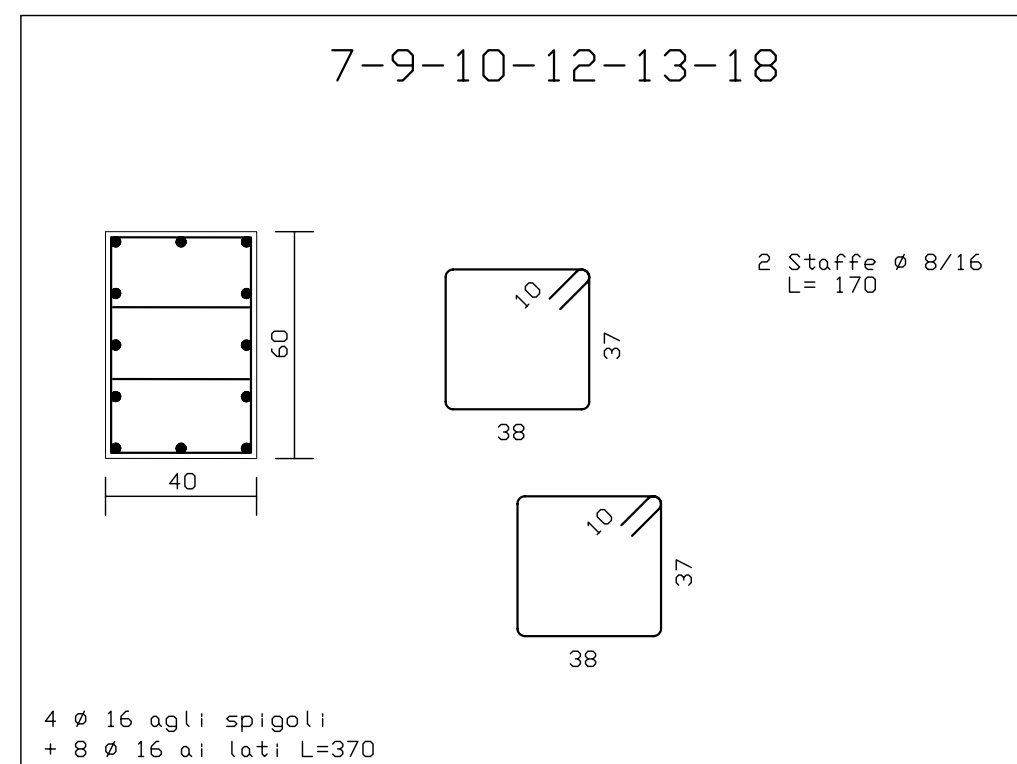
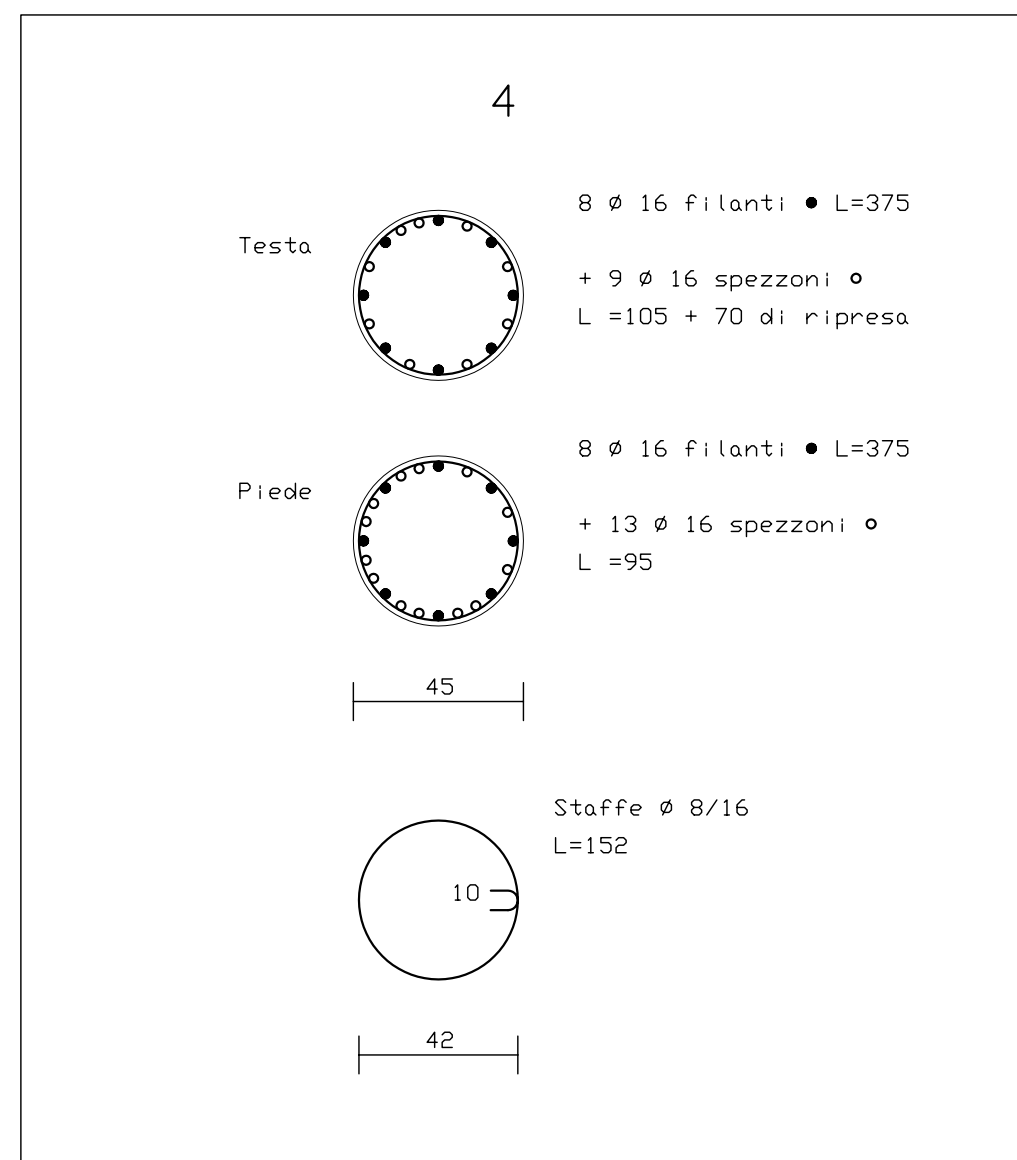
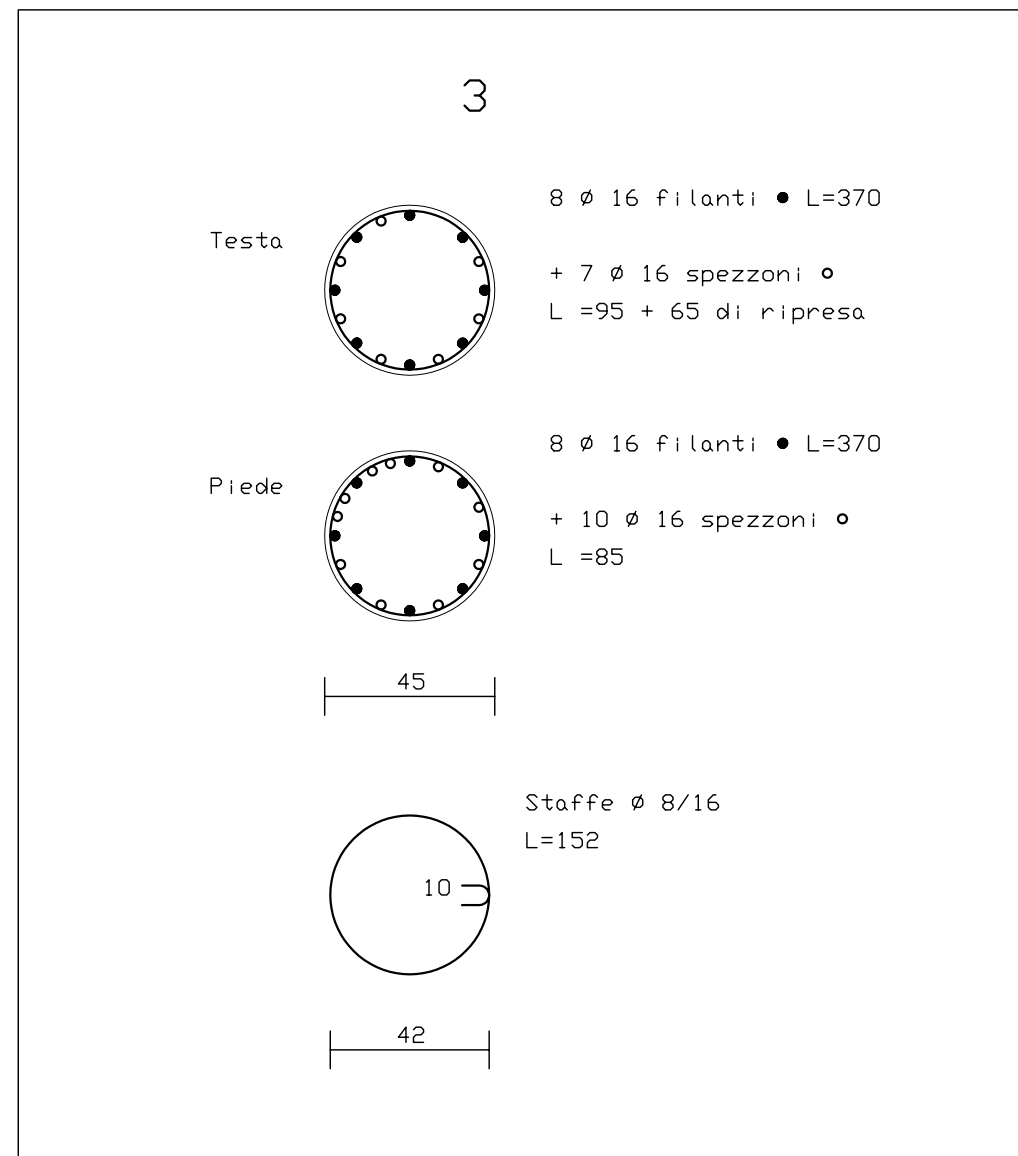
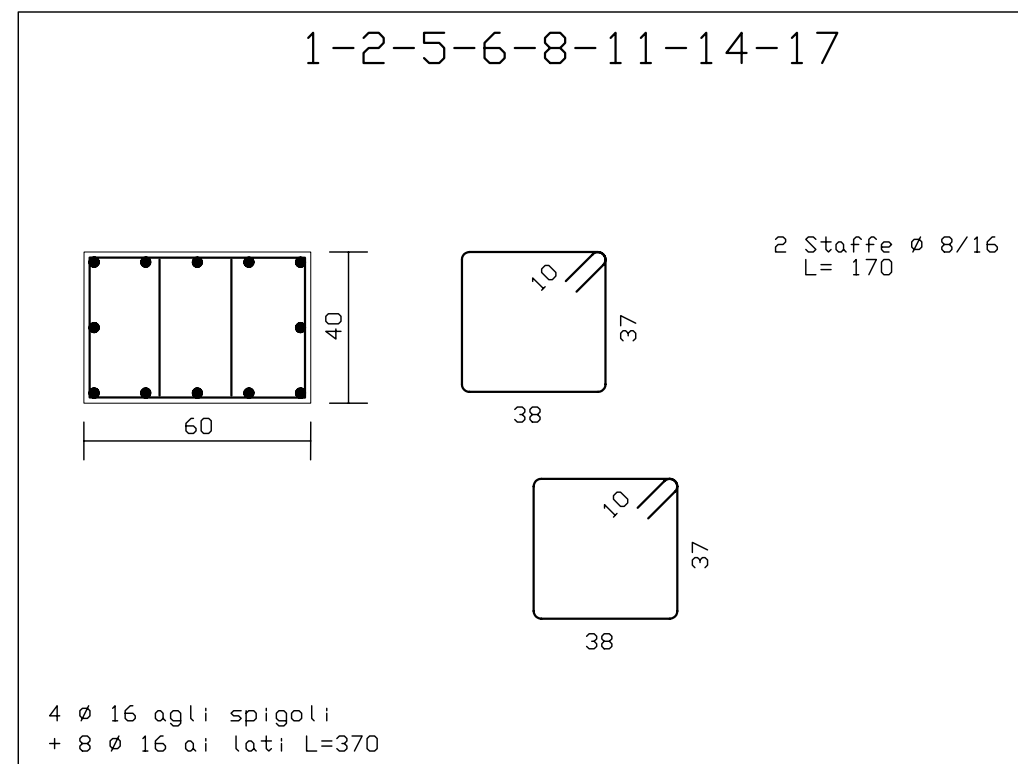
PILASTRI PIANO
COPERTURA

PILASTRI PIANO
TERZO

Infittire le staffe con passo
non superiore a cm 10 per cm 60
al piede e in testa al pilastro
Legature di collegamento # 6/30

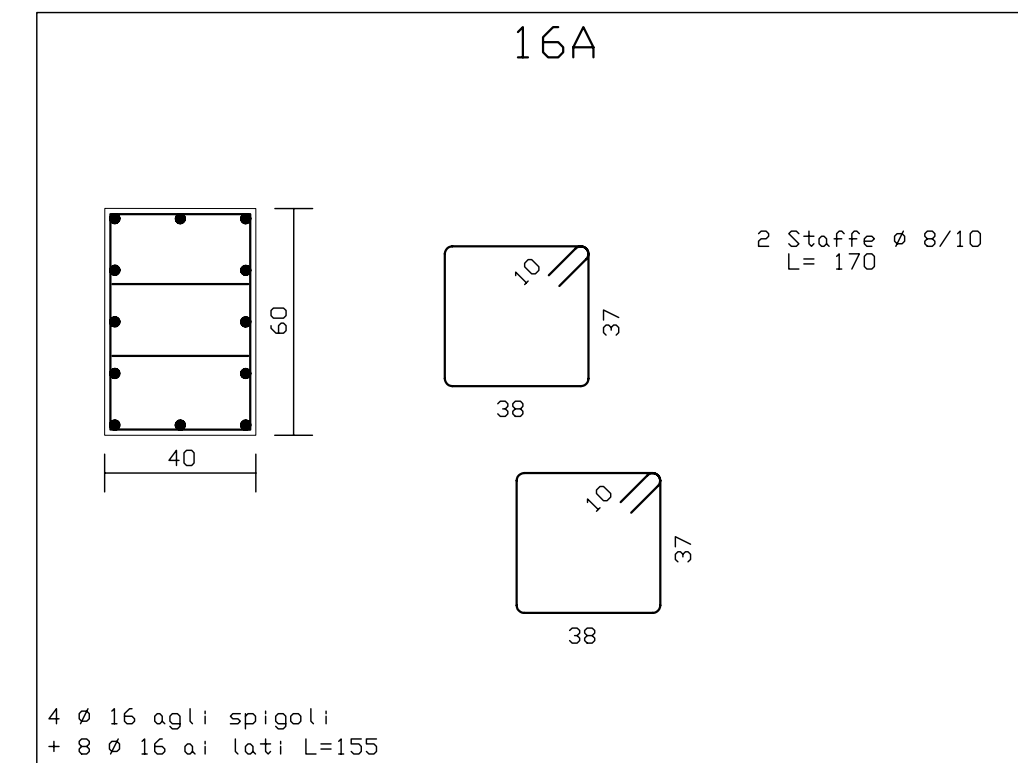
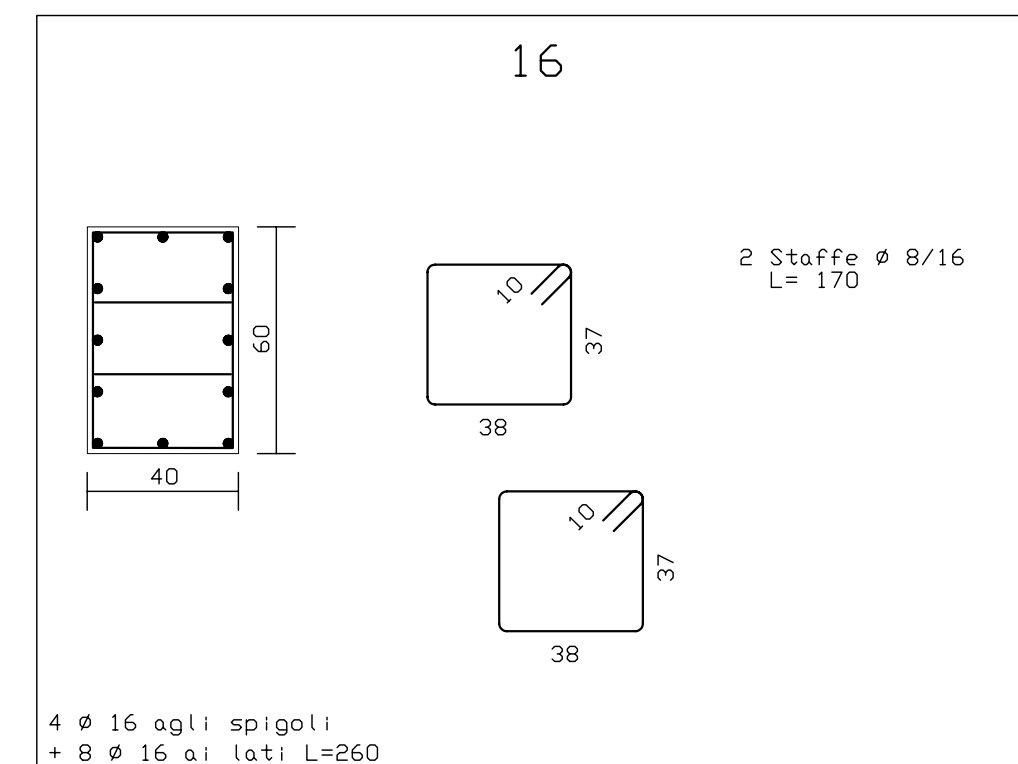
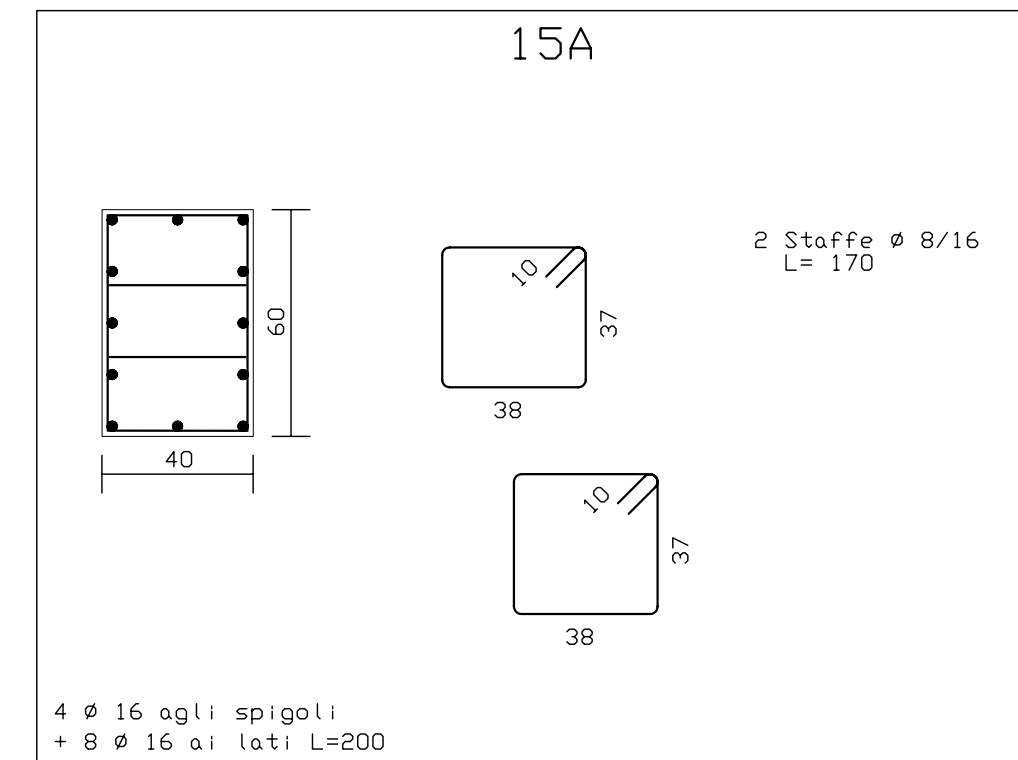
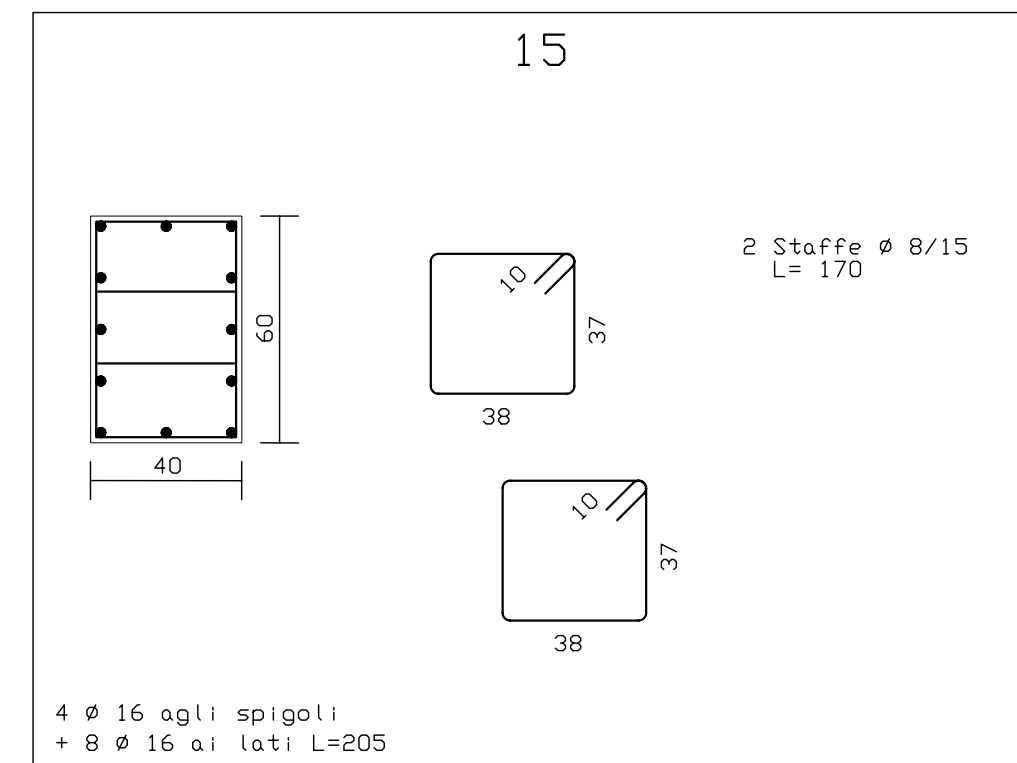
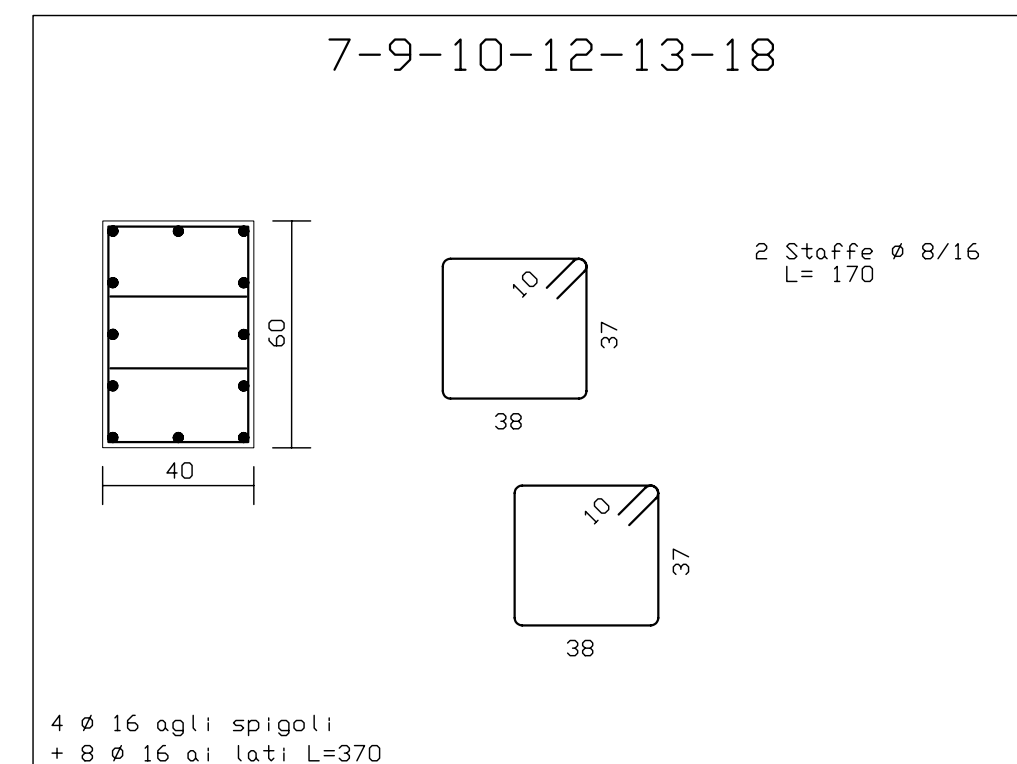
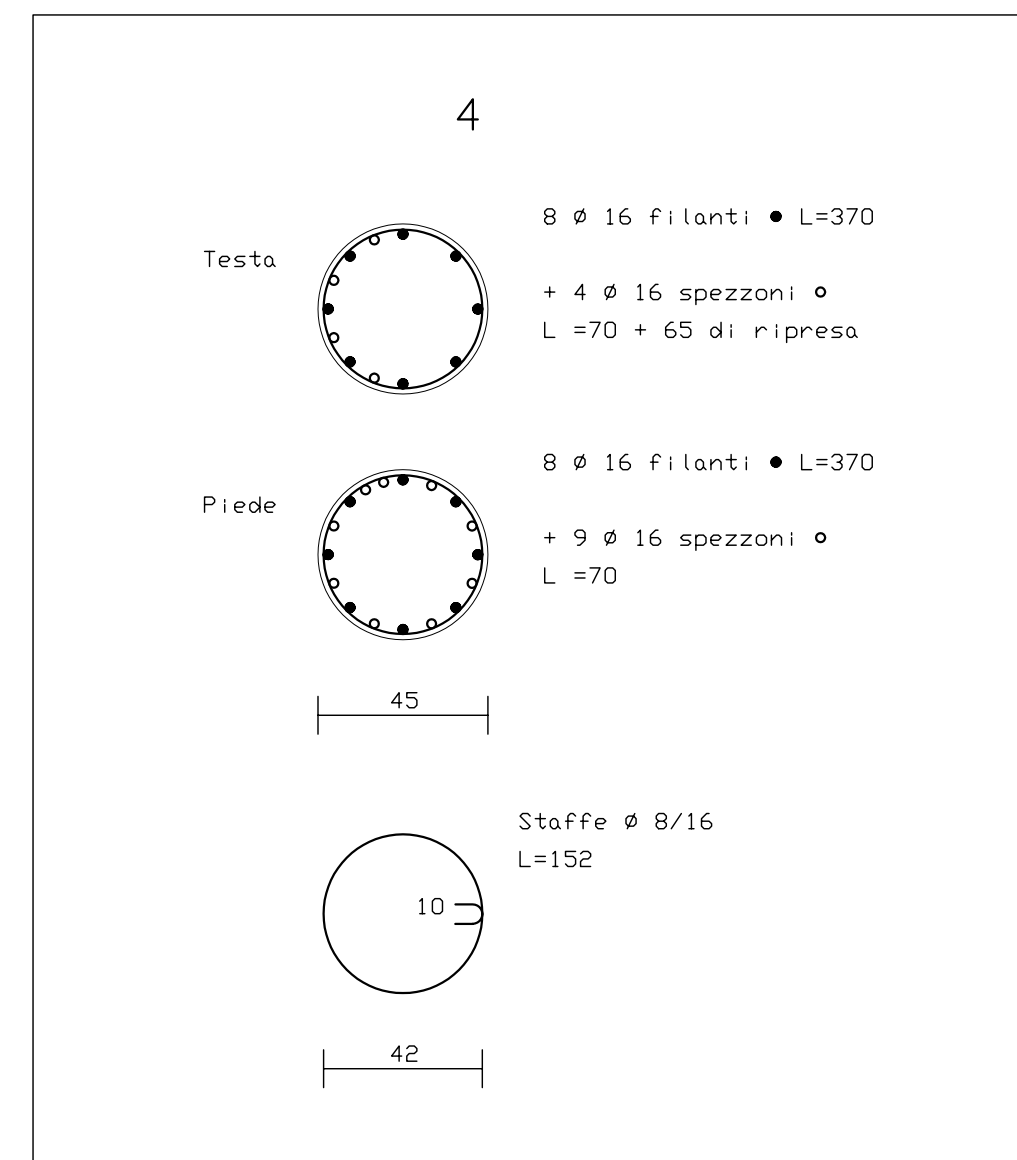
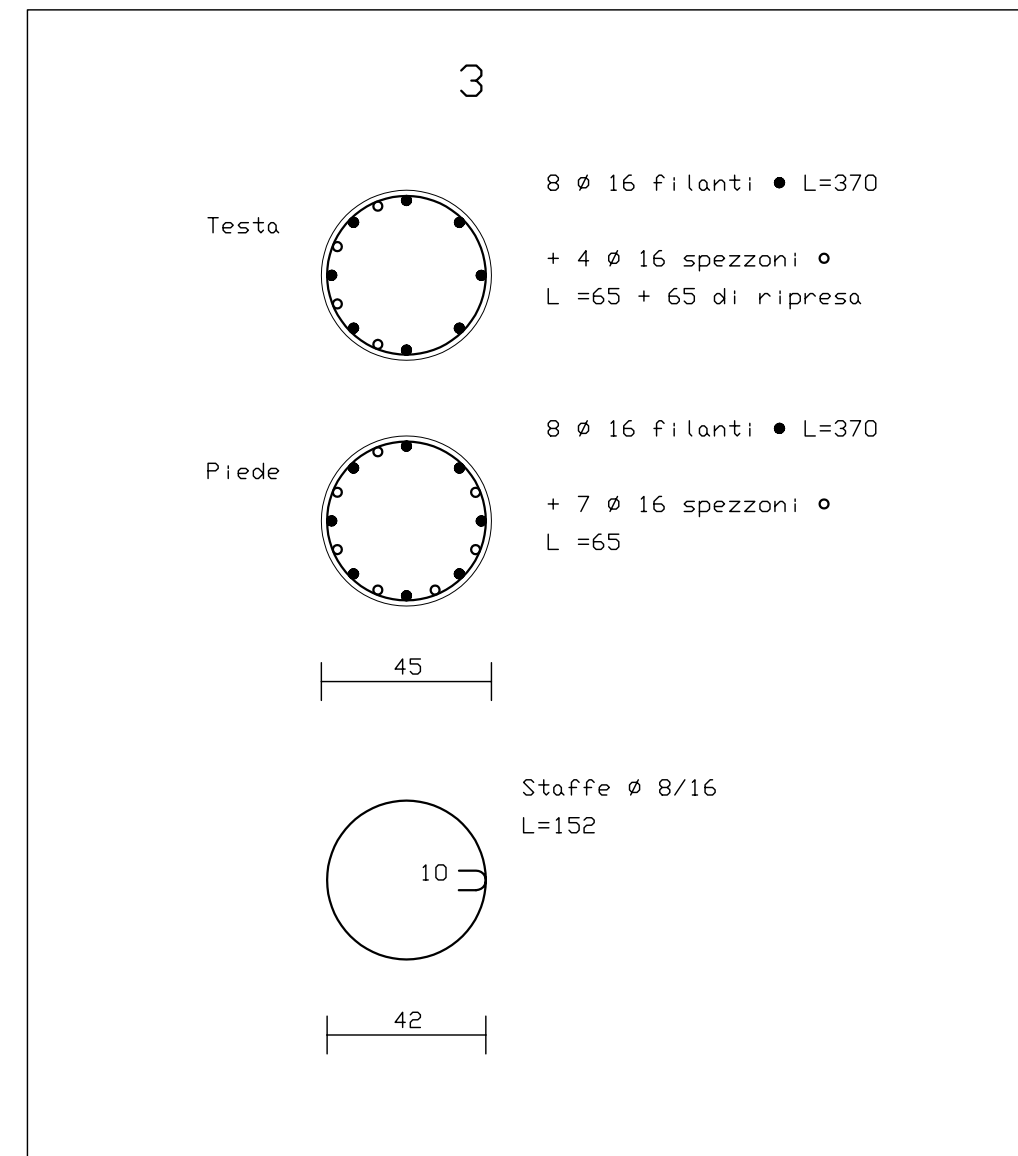
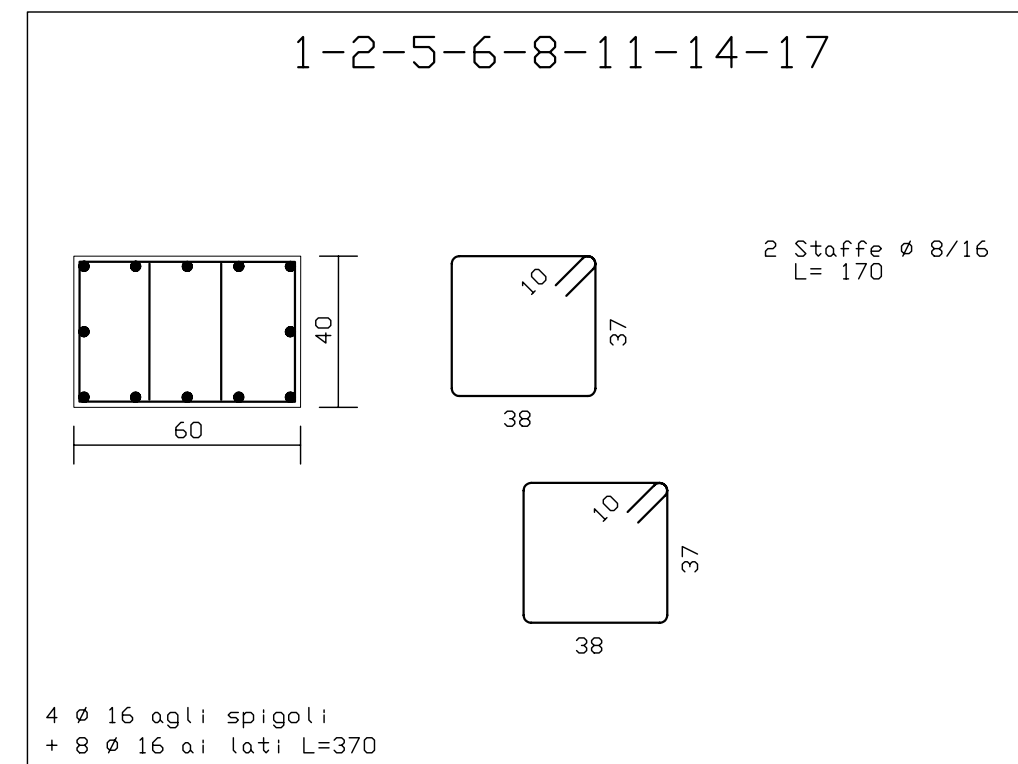
Computo dei materiali:

Barre di armatura :
16 L TOT =887,4m (+Kg 1305,91)
Staffe # 8 L=1469,28m (+Kg 579,75)
Infittimento Staffe (Kg. 231,90)
Num=108 38 X 37 L=653,6m
Num=384 24,5 X 57 L=702,70m
Num=48 circ. d=42 L=72,96m
TOTALE ACCIAIO :
Kg 2117,56
TOTALE CALCESTRUZZO :
mc 12,68
TOTALE CASSERI :
mq 106,82



Computo dei materiali:

Barre di armatura :
16 L TOT =880,65m (+Kg 1263,69)
Staffe # 8 L=1469,28m (+Kg 579,75)
Infittimento Staffe (Kg. 231,90)
Num=108 38 X 37 L=653,6m
Num=384 24,5 X 57 L=702,70m
Num=48 circ. d=42 L=72,96m
TOTALE ACCIAIO :
Kg 2075,34
TOTALE CALCESTRUZZO :
mc 12,68
TOTALE CASSERI :
mq 106,82



Infittire le staffe con passo
non superiore a cm 8 per cm 60
al piede e in testa al pilastro
Legature di collegamento # 6/30

Computo dei materiali:

Barre di armatura :
16 L TOT =872,6m (+Kg 1276,62)
Staffe # 8 L=1469,28m (+Kg 579,75)
Infittimento Staffe (Kg. 231,90)
Num=108 38 X 37 L=653,6m
Num=384 24,5 X 57 L=702,70m
Num=48 circ. d=42 L=72,96m
TOTALE ACCIAIO :
Kg 2153
TOTALE CALCESTRUZZO :
mc 11,22
TOTALE CASSERI :
mq 101,34

